



The Sangyo Shinko Co., Ltd. Profile

産業振興株式会社

Sangyo Shinko

Business Contents



Raw Materials Business



Steel Processing
and Sales Business



Iron Works
Contracting Business



Steel Transit and
Warehouse Business



Fertilizer Business

Our company is an affiliated company
of Nippon Steel & Sumitomo Metal Corporation.

Our company name "Sangyo Shinko" means a company contributing to the development of industry through steel.

We contribute to the development of the steel industry through five businesses related to each other around the raw material business.



Company Profile

■ Company Name : The Sangyo Shinko Co., Ltd.

■ Established : September 1st, 1937

■ Founded : January 1911

■ Capital : 390 million yen

■ Major Clients

- Nippon Steel Corporation
- Itochu Metals Corporation
- Shimizu Steel Co., Ltd.
- Sanyo Special Steel Co., Ltd.
- Osaka Steel Co., Ltd.
- Kyoei Steel Co., Ltd.

■ Major Correspondent Banks

- Sumitomo Mitsui Trust Bank, Ltd.
- The Bank of Tokyo-Mitsubishi UFJ, Ltd.
- Mizuho Bank, Ltd.
- Sumitomo Mitsui Banking Corporation
- Resona Bank, Ltd.
- The Bank of Iwate, Ltd.
- The 77 Bank, Ltd.
- The Norinchukin Bank
- The Shoko Chukin Bank, Ltd.

■ License & Certification

- Industry Waste Disposal Business
- Dealer in Secondhanded Articles
- Warehouse Business
- Harbor Loading and Unloading Business
- Authorized Bonded Warehouse
- General Cargo Car Transport Business
- Constructor's License

Organaization Chart



President

Head Office

- Administration and Planning Div.
- Internal Control Div.
- Personnel and Labor Administration Div.
- Accounting Div.
- Safety Promotion Div.
- Production Management and Technical Div.

Raw Materials Div.

Steel Processing and Sales Div.

Steel Transit and Warehouse Div.

Fertilizer Div.

Muroran Business Center

Kamaishi Business Center

Nagoya Business Center

Hirohata Business Center

Oita Business Center

Raw Materials Dept.

Raw Materials Sales Dept.

Hokkaido Raw Materials Dept.

Kyusyu Raw Materials Dept.

Tohoku Scrap Center

Kanto Scrap Center

Chubu Kansai Scrap Center

Sanshin Asahikawa Scrap Center Co., Ltd.

Inuma Kinzoku Co., Ltd.

Sales Planning Section

Sales Dept.

Nagoya Sales Dept.

Hirohata Sales Dept.

Steel Processing Center

Nigata Sangyo Shinko Co., Ltd.

Yayoi Steel Co., Ltd.

Yokohama Distribution Center

Sendai Distribution Center

Fertilizer Sales Dept.

Nagoya Fertilizer Center

Hokka Unyu Co., Ltd.

Raw Materials Business

Steel scrap can be described as steel fabricated by manufacturers in a variety of shapes and forms that has outlived its original purpose.

Steel scrap is a valuable resource and is continuously recycled by steel manufactures.

We are committed to environmentally friendly and effectively use of this precious resource.



Hokkaido Raw Materials Dept.



Tohoku Scrap Center



Kanto Scrap Center



Chubu Kansai Scrap Center



Kyusyu Raw Materials Dept.



Shredder



Guillotine Shear



In the Factory



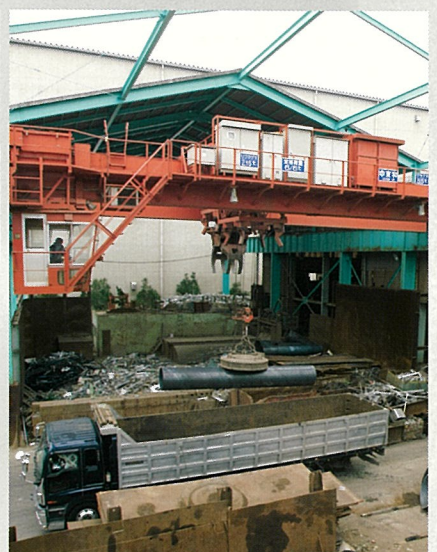
Guillotine Shear



Lifting Magnet



Radiation Detector



Lifting Magnet

Business Network

1 Head Office

Administration and Planning Div.
Internal Control Div.
Personnel and Labor Administration Div.
Accounting Div.
Safety Promotion Div.
Production Management and Technical Div.
Raw Materials Div.
Raw Materials Dept.
Raw Materials Sales Dept.
Steel Processing and Sales Div.
Sales Planning Section

Steel Processing and Sales Business

- 9 Nigata Sangyo Shinko Co., Ltd.
- 10 Sales Dept.
- 11 Steel Processing Center
- 12 Nagoya Sales Dept.
Tokai Warehouse
- 13 Yayoi Steel Co., Ltd.
- 14 Hirohata Sales Dept.

Raw Materials Business

- 2 Sanshin Asahikawa Scrap Center Co., Ltd.
- 3 Hokkaido Raw Materials Dept.
Muroran Yard
Tomakomai Yard
- 4 Tohoku Scrap Center
Iwanuma Yard
Kamaishi Yard
Shiogama Yard
Onahama Yard
- 5 Kanto Scrap Center
Hitachinaka Yard
Central Breakwater Yard
Ichikawa Yard
Funabashi Yard
Yachimata Yard
Daikoku Yard
Hamamatsu Yard
Shimizu Yard
- 6 Chubu Kansai Scrap Center
Tokai Yard
Osaka Yard
Himeji Yard
- 7 Inuma Kinzoku Co., Ltd.
- 8 Kyusyu Raw Materials Dept.
Miyazaki Yard
Otozu Yard

Steel Transit and Warehouse Business

- 15 Yokohama Distribution Center
Ebisucho Warehouse
Izutacho Warehouse
- 16 Sendai Distribution Center

Fertilizer Business

- 17 Fertilizer Sales Dept.
- 18 Nagoya Fertilizer Center
- 19 Tokyo Sales Office

Iron Works Contracting Business

- 20 Muroran Business Center
- 21 Hokka Unyu Co., Ltd.
- 22 Kamaishi Business Center
- 23 Nagoya Business Center
- 24 Hirohata Business Center
- 25 Oita Business Center

Business Contents

	Head Office	Muroran Business Center	Kamaishi Business Center	Nagoya Business Center	Hirohata Business Center	Oita Business Center	Tohoku Scrap Center	Kanto Scrap Center	Chubu Kansai Scrap Center	Steel Processing Center	Sendai Scrap Center	Yokohama Distribution Center	Nagoya Fertilizer Center	Sanshin Asahikawa Scrap Center Co., Ltd.	Inuma Kinzoku Co., Ltd.	Nigata Sangyo Shinko Co., Ltd.	Yayoi Steel Co., Ltd.	Hokka Unyu Co., Ltd.
Raw Materials Business	●	●	●	●	●	●	●	●	●	●	●	●	●	●	●	●	●	●
Steel Processing and Sales Business	●			●	●	●							●					●
Steel Transit and Warehouse Business												●	●					
Iron Works Contracting Business			●	●	●	●	●	●	●									●
(Environmental Recycling Business)			●		●	●	●	●										
Fertilizer Business		●														●		

Contact Address

BIZCORE Jinbouchyou, 2-9-3-chome, Kanda Ogawamachi, Chiyoda-ku, Tokyo 101-0052, Japan

Sangyo Shinko Co., Ltd.

TEL: +813-5259-6809 (Raw Materials Div.) FAX: +813-5259-6823

URL: <http://www.sangyoshinko.co.jp>